



MOTORINI GP 125

User's Manual

www.motorini.co.uk

Dear user:

Thank you for choosing to buy a Motorini GP 125

This manual provides the correct operation and maintenance methods for safe riding and maintaining the efficiency of your scooter.

Please read the owner's handbook supplied with your Motorini carefully and make sure all routine maintenance and servicing is carried out by the specialist staff of a Motorini dealer.

Important notice

The scooter is designed to carry one rider and one passenger, do not carry things over the max load capacity of the scooter.

The scooter is only designed to be used on the road.

Pay special attention to the sentences and paragraphs with the following warning symbols 

Index

I.Safe Riding

- 1.Rules for safe riding
- 2.Load capacities

II. Components

- 1.VIN and Engine number
- 2.Gauges and indicators

III.Operation guide

- 1.Right hand switch
- 2.Left hand switch
- 3.Ignition switch
- 4.Fuel tank
- 5.Luggage compartment
- 6.Centre stand

IV.Riding the vehicle

- 1.Daily checks
- 2.Tyre size and pressures
- 3.Refuelling
- 4.Starting the engine
- 5.Stopping the engine

6.Running in

V.Maintenance

- 1.Engine oil
- 2.Engine oil level Check
- 3.Gear oil
- 4.Spark plug
- 5.Brake fluid
- 6.Air filter
- 7.Battery

I. Safe riding

Warning: When riding the scooter please observe the following safety rules.

● Safe riding rules

1. Before riding please carry out daily checks.
2. Most accidents occur when other road users cannot see you; make yourself as visible as possible.

For example

- Wear visible clothing
 - Do not ride in other drivers blind spots.
1. Speeding is a major cause of accidents, always obey the speed limit.
 2. Always make other road users aware (with indicators) when you intend to change lanes or when turning
 3. Be more careful when approaching crossings
Schools parked cars etc.

4. Always ride with both hands on the handlebars and feet firmly on the footboard.
5. Do not leave the scooter unattended with the engine running.
6. Avoid riding on uneven roads with pot holes as this may damage the scooter.

● Never overload the scooter, and observe the Max Load capacities.

- Rear carrier 5 Kg
- Front luggage box 1 Kg
- Under seat storage 10Kg

II Components

- (1) Head Light
- (2) Front Indicator
- (3) Rear Brake
- (4) Rear View Mirror
- (5) Seat
- (6) Tail Light
- (7) Rear Indicator
- (8) Air Filter
- (9) Engine
- (10) Passenger Foot Rest
- (11) Main Stand
- (12) Side Stand



1. Scooter VIN and Engine Number

The scooter VIN number is stamped on the frame behind the access panel.

The engine number is stamped on the left hand engine case.

Please write down frame and engine number.



(1)



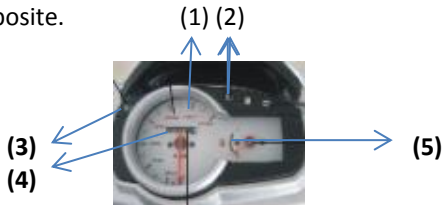
(2)

VIN Number _____

Engine Number _____

2. Gauges and Indicators.

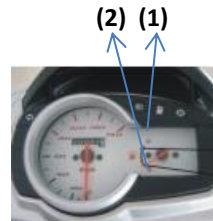
The function of each indicator light is listed on the table opposite.



1	Speedo
2	Main Beam
3	Indicator Warning Light
4	Milometer
5	Fuel Gauge

Fuel Gauge

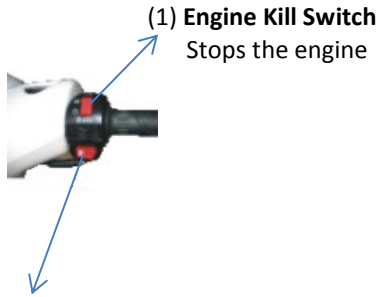
The fuel gauge (1) indicates the approximate fuel in the tank. When the needle points to (F) it indicates the tank is full.



When the needle enters the red warning (2) please refuel.

III Operating Guide

● (1) Right Handlebar Switch

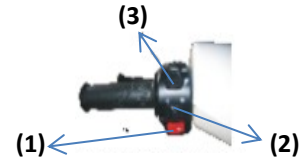


Starter button (2)

The starter button (2)

Operates the electric starter. For the starter to operate the ignition switch must be turned to the **(ON)** position and the front brake lever must be pulled to the handlebar.

● (2) Left Handlebar Switch



Horn button (1)

When the horn button is pushed, the horn will sound.

Direction indicators switch (2)

Move the switch to the right to activate the right-hand indicators and to the left to activate the left-hand indicators Push the button **(B)** to deactivate the turn indicators.

Headlight Dip Switch (3)

The headlight dip switch (3).

To select high beam, push the switch **(3)** to the forward position.

To select low beam, push the switch **(3)** to the backwards position.

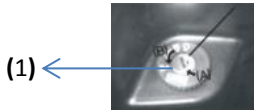
● (3) Ignition Switch

The ignition switch (1) is located on the inner leg shield and is a 3 position key-operated switch. By rotating the key, it is possible to turn the switch to any of the following positions:

(OFF): the engine cannot be started.

(ON): the engine can be started.

(LOCK): turn the handlebars fully to the left, push the key down and turn anti-clockwise (B) , the steering is now locked and the engine may not be started.



● (4) Fuel Tank

The Fuel Tank is behind the seat.

To open the cover of the fuel cap, insert key into the lock (2) and turn clockwise.

After refuelling always check that the filler cap is correctly located and closed, push down on the cap down until you hear it click.

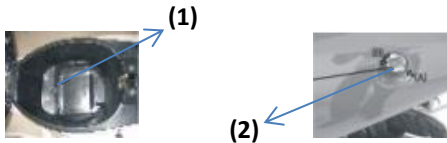


● (5) Luggage Compartment

To gain access to the luggage compartment **(1)** proceed as follows:
Insert your key into lock **(2)** and turn clockwise.

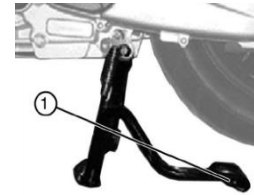
To close the seat, proceed as follows:

Do not let the seat fall from the fully open position.
Lower it on to the lock and slightly press it down in order to engage the seat on to the lock.



● (6) Centre Stand

Push the stand's bracket **(1)** downwards with your foot, whilst easing the vehicle backwards until it rests safely on to its centre stand.




▲ Do not sit on the vehicle when it is resting on its centre stand.

Always park on a firm, level surface to prevent the vehicle from falling

IV Riding The vehicle

(1) Daily checks

 **The following checks must always be carried out before riding the vehicle in order to ensure trouble-free operation. Failure to comply with this rule may lead to serious injuries and damage to the vehicle**

Engine oil	Check Level.
Gear oil	Check For Leaks.
Braking system	Check the levers are not sticking, Check the brake fluid level and system for leaks.
Lights, Indicators, Horn	Check all are working.
Tyres	Check for correct inflation pressure, wear/damage.
Centre/Side Stand	Check they retract properly.
Fuel Tank	Check the fuel level and ensure there are no leaks.

● (2) Tyre Pressures and Size

Tyre pressures must always be checked when the tyres are cold. Incorrect tyre inflation will cause abnormal tread wear and instability problems that may lead to loss of control and an accident resulting in serious damage and injuries.

Front Tyre Pressure	2.5 bar (36 psi)
Rear Tyre Pressure	2.5 bar (36 psi)
Tyre Size	110/60 – 4PR

● (3) Refuelling

Follow the procedure described in **(III)**. **(4) Fuel tank** section of this handbook to access the fuel tank and refuel your vehicle.

Fuel Tank Capacity: approx. 6.8 litres

▲ **During refuelling, the ignition switch must be in the OFF position. Petrol (fuel) is highly flammable; do not smoke; keep away from source's of ignition; do not inhale petrol fumes.**

▲ **To prevent damage, ensure that petrol does not spill onto the plastic fairings of the vehicle.**

● (4) Starting The Engine

Once all checks described in the **IV.(1) Daily checks** section have been carried out, you may proceed to start engine as follows:

Place the vehicle on its centre-stand with the rear wheel lifted off the ground.
Insert the key in the ignition switch **(1)** and rotate it to **(ON)**.

Keep the throttle control in the closed position.

While pulling the front brake lever press the starter button **(2)** as shown



(1)



(2)

▲ **Never start the engine without its airbox. Dust or foreign objects may enter the engine and damage it.**

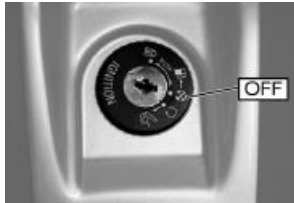
▲ **After starting the engine ride at moderate speeds during the first few minutes. A correct engine warm-up limits the emissions and reduces fuel consumption.**

▲ **To prevent damage, do not rev up the engine when cold. To safeguard the integrity of the engine and its duration lasting performance, avoid riding at high revs for long periods of time
Do not suddenly switch off the vehicle after riding for a long time at the maximum speed; let it run at idle for a few seconds.**

● (5) Stopping The Engine

Bring the vehicle to a halt and rotate the ignition switch to the **(OFF)** position

With the ignition switch in this position, it is not possible to start the engine, the key may be removed and the steering lock is not engaged.



● (6) Running-In



▲ A period of careful running-in will ensure the longevity of the engine.

▲ **YOU MUST ALWAYS HAVE YOUR VEHICLE UNDERGO THE FIRST AND MOST IMPORTANT SCHEDULED SERVICE**

Important Notice

The first 1,000 km represent the most critical period in the life of your vehicle. A period of careful running-in will optimise the performance, and longevity of the engine and other components. All Motorini parts have been made using the highest quality materials and have been machined with minimal tolerances. A correct running-in allows all components to 'bed-in' thereby reducing internal frictions.

The reliability and performance of your vehicle depend on how strictly you follow the instructions provided within this section. It is important that you prevent the engine from overheating.

Engine speed should be varied constantly and it must not be allowed to remain constant for a long period of time. This ensures that engine components are not being excessively stressed, thus allowing them to cool down and to bed in properly. You must always ensure that engine components are not being overstressed by avoiding high engine speeds.

The first service, at the 1,000 km (600 miles) mark, is the most important one for your vehicle. During running-in all components will bed-in, thus requiring all adjustments to be checked, all fixings to be tightened and engine oil to be replaced.

Performing such operations as soon as possible after the first 1,000 km (600 miles) will ensure the longevity and optimal performance of your engine.

NB: The 1,000 km (600 miles) service must be carried out according to the "Scheduled Maintenance" section of this handbook.

V Maintenance

● (1) Engine Oil

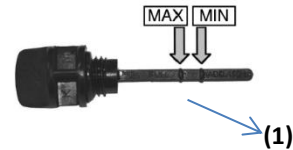
Engine oil level checks, top ups and replacement must be carried out in accordance with the scheduled maintenance chart.



(1) Oil Filler/Dipstick

Engine oil: SAE 10W-40 API-S
Quantity of engine oil 1.0 Ltr approx.

● (2) Engine Oil Level Check



Rest the vehicle on its centre stand and on level ground.

Loosen and remove the filler plug/dipstick **(1)** and dry it with a clean rag.

Refit and tighten the filler plug/dipstick **(1)**.

Loosen and remove the filler plug/dipstick **(1)** for a second time and check that the oil level is now between **MIN** and **MAX** marks as show in the figure

▲ Running the engine with insufficient or contaminated oil will cause engine damage

● (3) Gear oil

How to change gear oil

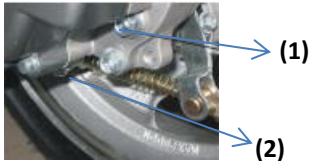
Stand up the main stand.

Remove the oil filler plug **(1)**

Remove the oil drain plug **(2)** and drain out old gear oil.

Tighten the oil drain plug **(2)**.

Refill with fresh gear oil and tighten the oil refill plug **(1)**.



Please use the recommended gear oil:

SAE 5W/90

- Total capacity: 110ml approx.
- Replacing capacity: 100ml approx.

● (4) Spark plug

Remove the spark plug **(1)** using the spanner provided in the tool kit.

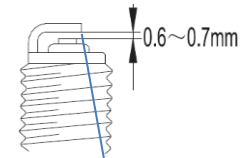
Clean off any dirt and carbon residue from the spark plug and check the spark plug gap.

Manually screw the spark plug in its seat and carefully tighten.

Refit the spark plug cap.



(1)



(2)

Adjust the gap **(2)** to 0.6-0.7mm with a feeler gauge.

Replacement Spark Plug NGK CR7HSA

● (5) Brake fluid

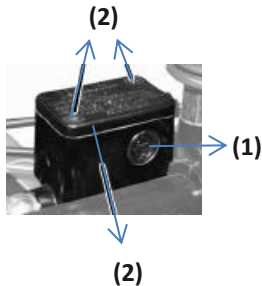
Ensure that the brake fluid level is never below the minimum level marking **(1)**.

The brake fluid reservoir is located on the right handlebar.

TOP UP

Release the two reservoir cap screws **(2)** and detach the cover **(3)** and sealing diaphragm.

Top up with new **DOT4** brake fluid from a sealed container.



● (6) Air filter

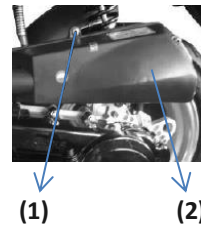
Your vehicles air filter must be cleaned in line with the scheduled maintenance chart.

Remove the five fixing screws **(1)** on the airbox cover.

Remove the airbox cover **(2)**.

Unscrew the two retaining screws and remove air filter element.

Clean or replace element



● (7) Battery and main fuse

To replace the battery, proceed as follows:

Rest the vehicle on its centre stand and on level ground.

Ensure that the ignition is switched off

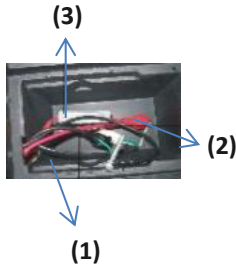
Remove battery cover

Disconnect the leads starting with the negative lead

- **(1)** followed by the positive + **(2)**.

Remove the battery.

The main fuse is also located here **(3)**.



▲ ***Do not swap the battery leads. Reconnect the battery, positive lead first.***

▲ **This vehicle is fitted with a sealed (maintenance free) battery. Only use a suitable 12V charger. Do not attempt to remove cell caps as this may damage the battery.**

The main fuse **(3)** is located in the battery box.

The fuse rating is 15 amp.



www.motorini.co.uk

Distributed By:

Clements Moto Ltd, Unit 1a Woolton Farm, Bekesbourne, Canterbury, Kent. CT3 1QU