



125 - H MANUAL

Preface

Thank you for choosing our motorcycle , we design, test, and manufacture this motorcycle through our advanced technologies, so that you will have more safety and fun on driving , After finish reading every item in this manual, you will find driving motorcycle is an exciting sport, and from which you can enjoy beautiful feelings.

This manual provides general information of maintenance and service for this motorcycle. As long as you observe maintenance guideline in this manual, your motorcycle may have long service life and avoid faults. Depending on professionally trained technicians and complete tools as well as perfect equipment, our distributors will provide you with best repair and after service.

All data included in this Manual, such as illustration, picture and technical parameter, are based on latest Products when this Manual is released. However, as a result of continuous improvement of products and variation on other aspects, your motorcycle may be different from this Manual. Therefore, our distributor will guide you correctly at any time.



Copyright © GUANGDONG TAYO MOTORCYCLE TECHNOLOGY CO., LTD
All Rights Reserved.

Any republication, copy and extract of this manual shall not be allowed
without writing authorization of GUANGDONG TAYO MOTORCYCLE
TECHNOLOGY CO., LTD.
Please contact the local authorized dealers for this manual.

Content

Summarize

Instruction to user -----	1
About information of security -----	2
Safety instruction for driver's operation -----	2
Number position -----	3
Mounting positions of components and parts -----	4

Control

Key -----	6
Ignition switch -----	6
Lock handle bar -----	6
Meter panel -----	7
Left handle control system -----	8
Right handlebar switch -----	9
Parking stand -----	10
Fuel switch -----	11
Gear shift lever -----	12

Rear brake pedal -----	12
Starting lever -----	12
Tool kit -----	13

Driving

Knowledge in respect of motorcycle running in -----	13
Key points of operation -----	13
Check prior to operation -----	14
Start— up of engine -----	15
Running -----	15
In the case of variable speed gear -----	15
Climbing up -----	16
Brake and stop -----	16

Troubleshooting

Running in of new motorcycle -----	17
Use instruction for fuel and engine oil -----	18

Content

Regular maintenance -----	19
Battery -----	21
Air filter -----	22
Spark plug -----	23
Fuel filter element cleaning or changing -----	24
Machine oil -----	24
EFI system -----	26
Adjustment of throttle dragline -----	27
Clutch -----	27
Transmission chain -----	28
Rear spring adjustment of shock absorber -----	29
Maintenance and service of silencer -----	30
Brake system	
Combined Brake System -----	30
Brake oil -----	31
CBS brake -----	32
Brake indicator switch -----	33

Tyre

Tire pressure -----	34
Tyre damage -----	34
New wheel and tyre -----	35

Electric system

Replace bulb of front light -----	35
Replace bulbs of front and rear indicator lights -----	36
Taillight and stoplight is replacing -----	36
Cartridge fuse -----	37
Use instruction for storage battery -----	37

Troubleshooting

Troubleshooting -----	39
Specification table -----	40
Circuit diagram -----	41
Abbreviation form -----	42

Instruction to user

Various parts in the market may be available to your motorcycle. We cannot directly control their quality and suitability. Inapplicable parts may threaten driver's safety. Although we cannot check applicability of marketable parts one by one, your distributor can help you select high-quality parts and install them in your motorcycle correctly.

In order to enable you to select and install parts carefully and properly, we provide you with selection and installation criterion for your reference, on which you may rely to determine specification and installation method of accessories.

(1) Accessories over-weighted or susceptible to wind should be mounted as low as possible to attach to body closely and be close to center of gravity. Carefully check storage rack and accessories for firm installation. Improper installation may cause centre of gravity shift to result in safety danger. Key point of accessory installation is :balance between left and right sides, firmness and stability.

(2) Check accessories to be installed for proper height from the ground and inclination angle. Improper installation may lower two safety factors. Special attention should be paid to avoidance of damage to functional system such as shock absorber, direction indication and control etc.

(3) If accessories are mounted in steering handle or front fork, serious unbalance may occur. This impairs steering sensitivity to cause vibration of front wheel and unstable drive. In the case of accessories mounted in steering handle or front fork, their weight shall be minimized.

(4) Wind screen, backrest, saddle bag, and travelling case etc are susceptible to wind, thus causing unstably driving. This is apparent expressly in the case of side wind or heavy wind arising from heavy-duty vehicles. Therefore, improper installation and design of accessories may threaten life. However, special attention must be paid to selection and installation of accessories.

(5) Some accessories makes driver's seat deviate from normal position. This restricts driver's operation range, but also his / her operational capacity.

(6) Electrical accessories beyond specified specification may cause overloaded electrical system. In the event of high overload, wiring might be damaged or wires disconnect to cut off power; as a result, to cause danger.

About information of security

Read and observe this Manual carefully. These terms such as 'warning' 'Caution' and 'Notice' are used to emphasize intensity of precaution. Please study and understand their meanings thoroughly.

Warning

For warning information, in order to protect you and other people's safety as well as avoid damaging your motorcycle, this precaution must be read.

Caution

It is notice information; In order to extend service life of your motorcycle and exert its performance well, please carry out according to notice information.

Notice

It can help you to use your motorcycle in best of all condition based on its useful information.

Safety instruction for driver's operation

Driving motorcycle is an enjoyable and exciting sport. You must comply with following instruction to assure your safety:

Wear safety helmet

It is preferred to select safety helmet in conformity to safety quality standard. Worst traffic accident may cause head injury. Therefore, you must wear safety helmet and safety glasses while driving motorcycle.

Safety clothing

Loose and bizarre clothing is uncomfortable and unsafe. Tight clothing should be selected as possible while driving motorcycle.

Be familiar with motorcycle

Your operation skill and mechanical knowledge will ensure safe operation. You'd better carry out practice repeatedly in an open field till you are able to be familiar with mechanical property and operation method of motorcycle. Keep in mind! Skill Comes From Practice.

Know your operation skill

You must operate your motorcycle skillfully within required technical specification to avoid accident.

Precautions in overcast and rainy weather

In the case of overcast and rainy weather, pay special attention to brake. However, keep in mind: braking distance in overcast and rainy weather is twice that in fine weather. While driving your motorcycle in overcast and rainy weather, you must avoid some slipping sections on road surface, such as marking paint, wellhead cover, oily area to prevent your motorcycle from slipping off. Pay special attention to driving when passing through railroad junction, grill and bridge. Should it be impossible to judge the conditions of road surface, you have to decelerate.

Reconstruction

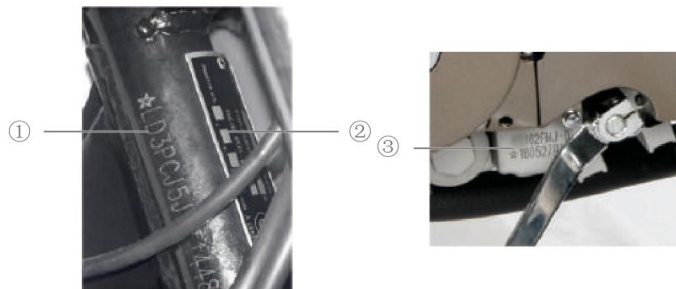
Reconstruction or disassembly / assembly of prototype parts without permission will violate safety warranty and be illegal, thus resulting in unsafe operation. Drivers must comply with motorcycle operation provisions stipulated by Traffic Authority.

Reconstruction

Reconstruction or disassembly / assembly of prototype parts without permission will violate safety warranty and be illegal, thus resulting in unsafe operation. Drivers must comply with motorcycle operation provisions stipulated by Traffic Authority.

Number position

Vehicle ID number (VIN) and number of engine are used for registration of a motorcycle. When ordering parts or entrusting special service, your distributor may provide you with better service according to these numbers.



① Vehicle ID number (VIN) ② Nameplate on rack ③ Number of engine

Vehicle ID number (VIN) ① and nameplate ② are imprinted on vertical steering pipe; number of engine ③ is imprinted on left side of crankcase.

Please record these numbers in corresponding blank for later reference.

Vehicle ID number (VIN):

Number of engine:

Mounting positions of components and parts



(1) Clutch handle

(5) Switch on right handle

(2) Switch on left handle

(6) Accelerator control handle

(3) Meter

(7) Front brake handle

(4) Electric door lock switch

(8) Cover of fule



(9) Muffler

(10) Rear disc brake

(11) Start crank

(12) Oil level

(13) Rear brake pedal

(14) Ignition coil



(15) Front disk brake

(16) Gearshift pole

(17) EFI system

(18) Main stand

(19) Side stand

Control

Key

This motorcycle is provided with two keys, one of which should be kept properly for standby.



Ignition switch

Ignition switch is available to two positions:

“” (OFF position)

All circuits are in open-circuit state.

“” (ON position)

All circuits are connected to be ready for ignition. However, key must always be inserted in place in the case of this position.

Lock handle bar

Turn the key to position (lock handle bar) to stop the motorcycle. In this case, the key may be taken off, but handle bar cannot be turned freely; hence assuring safety in absence of driver.



Warning

- Before turning the key to lock handle bar position, you must stably support motorcycle by means of side stand or main stand.
- When steering mechanism is locked, never move motorcycle to avoid unbalance.

Meter panel



① Oil level indicator

This indicator shows oil level in oil tank.

② Speed meter

Speed meter indicates running speed in km/h or mph.

③ Odometer / Mileometer

Odometer records total mileage as from operation commencement. Mileometer is a kind of odometer returnable to zero. It is used to record short distance mileage or roughly estimate fuel consumption.

④ Clock

This clock displays the current time.

⑤ Buttons

- Shortly press SELECT button, the mileage number will be shown on the mileage table of "Total" and "Trip".

- On the mode of "Trip", press the SELECT button for a long time, the taximeter will go back to zero.

- Shortly press ADJUST button, the speed mileage unit will be shifted between KM/H and MPH

- On the mode of TOTAL, press SELECT for a long time, the hour unit of the clock ④ will twinkle, shortly press ADJUST button, we can add hour(1-12), and we can continually press the SELECT button, the minute unit will twinkle, shortly press ADJUST button, then we can adjust to add minute (00-59), continue to long press SELECT button to exit.

- To press for a long time $\geq 2s$, press shortly $< 2s$

⑥ High beam indicator

When turning on headlights on full beam, the indicator will enable blue lamp.

⑦ Shift indicator

Shift indicator shows shift position, i.e. 1,2,3,4 and 5. While changing over shift, they light by turns. When changing to neutral position, all indicators go out, but neutral position (green) lights.

⑧ Steering indicator

When steering signal switch is set to left or right side, the indicator will flicker.



Caution

If the turning light switch is operated, the indicator will flash.

⑨ Error indicator

When turning on the ignition switch with the key, this indicator is on for 3 seconds, and then it will be off. When error occurs, indicator is on until problem is solved.



Caution

If indicator is on during your riding, please stop and check the motorcycle. Do not ride again before problem is solved.

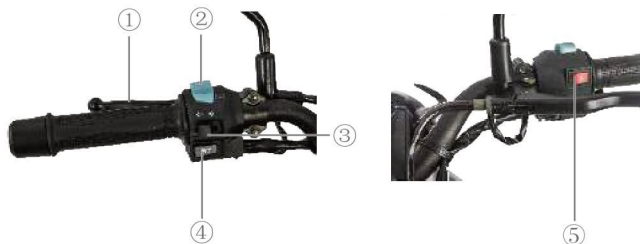
⑩ Neutral position indicator

When gear shift is in neutral position, this indicator lights; when in any position beyond neutral position, this indicator goes out.

⑪ Tachometer

Tachometer indicates rate of revolution (rev) of engine, i.e. revolutions per minute.

Left handle control system





① Clutch handle



When starting up engine or changing shift, hold this handle to separate clutch friction disk, hence cutting off power.

② Dimmer switch

High beam / city beam operation

When dimmer switch is set to  position, high beam is enabled; in the meanwhile high beam indicator on the panel lights. When the switch is set to  position, city beam is enabled and high beam is disabled.

③ Steering signal operation

When this switch is set to left , left turning indicator lights; when set to right , right turning indicator lights. In the meanwhile, steering indicator on the panel flickers.

④ Horn button

Press this button to make horn sound.

⑤ Danger-warning switch

Press this button, the four lights are flashing, and warned nearby vehicles to pay attention to the safety.



Warning

Before changing lane or turning round, driver must give turning signal. After changing lane or turning round, driver must turn off steering light.

Right handlebar switch



① Shut down switch

Switch the engine stop button

② Front brake handle

When enabling front brake handle, firmly hold brake handle on right side. Because of hydraulic disk brake, high holding force isn't needed while braking. When holding brake handle firmly, brake indicator will light automatically.

③ Accelerator control handle

Accelerator control handle is used to control rev (rate of revolution) of engine. When turning this handle inward (to yourself), the engine accelerates; contrarily, when turning it outward, the engine decelerates.

④ Start-up button

Press this button to switch on starting circuit. When starting up, you must set shift to neutral position, confirm if engine flameout switch is in "O" position, and hold clutch handle to ensure safety.



Warning

In the case of continuous start-up, each starting time cannot exceed 5min because considerable discharge makes the circuit and starting motor heat abnormally. In the event that the engine cannot start up after several trial runs, you should check oil supply system and starting circuit system. (please refer to Section 1 "Troubleshooting")

The danger-warning switch shall be used only when the vehicle stops to work for the malfunction on the road. Never open it when driving normally.

Parking stand

This motorcycle is equipped with main stand and side stand. When using main stand, you should pedal on main stand meanwhile your left hand holds steering handle and right hand holds rear storage rack, and then pull the motorcycle backwards to support it stably.



① Main stand

② Side stand

③ Rear armrest



Warning

Rear storage rack bears up to 5kg load; otherwise overload may impact stable driving; thus resulting in danger and damage to the rack.

Side stand Prior to starting up, check these stands for upper limit positions.

Fuel switch

This motorcycle is equipped with manual fuel tank switch available for three positions:

"∩" ON

"∪" Standby

"●" OFF



(ON)



(Standby)



(OFF)

"∩" ON position

In the case of driving condition, the handle is set to this position. When fuel level in the carburetor lowers, gasoline flows into float chamber of the carburetor via the switch.

"∪" Standby position

If fuel level in the tank is too low, you may turn the handle to this position to consume about 3.5 L standby fuel.

"●" OFF position

When parking time exceeds several minutes, you should turn the handle to this position.



Caution

If switch handle of fuel tank is always in "ON" position, the Carburetor may overfeed fuel, even make fuel flow into the engine. In this case, starting up might cause damage to the engine.

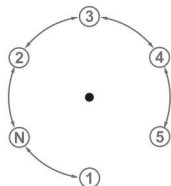
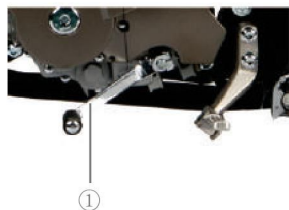


Notice

As soon as the handle is turned to standby position, you should add fuel in the tank. You should return the handle to "∩" (ON) position after the tank is full.

Gear shift lever

This motorcycle is equipped with 5- shift geared- transmission shown as right figure. Gear lever ① is connected with ratchet mechanism in the geared- transmission. After one shift is enabled, the lever will automatically return to original position to change over to next shift. Under neutral position condition, Ratchet mechanism cannot enable two shift forwards and backwards at same time. However, neutral position shift 1 and 2.



International Gear

Before changing to lower shift, you should decelerate to drive. Before the lower shift is enabled, you hold clutch handle to increase rev of the engine; hence preventing components and parts of drive system and rear wheel from wearing out unnecessarily.



Caution

In the case of neutral position, when neutral position indicator lights, you had better release clutch handle slowly to confirm if neutral position is really available.

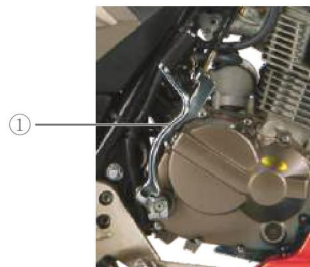
Rear brake pedal

When pressing the brake pedal ①, rear brake works. When operating rear brake, brake indicator lights.



Starting lever

This motorcycle is equipped with kick- back starting lever ① on right side of the engine. Because of pedal kick- back starting mechanism, the engine can start at any shift level when the clutch doesn't engage.



Tool kit

Tool case is under the seat. Tools can be take out after the seat is lifted.



Driving

Knowledge in respect of motorcycle running in

For this model, 1000 km initial driving mileage will play the most important role in service life of a motorcycle. During its running in period, running in of motorcycle correctly enables it to have longest service life, but also brings its performance into play sufficiently. All components and parts used in this model Motorcycle are made of high quality materials and machined in precision manner. Correct running in makes all parts used in a motorcycle work with each other and engage smoothly.

Motorcycle running in properly and effectively enables it to drive stably, thus bringing its high performance into play sufficiently. Special attention should be paid to avoid overheated in engine.

Refer to 'Maintenance' section for detailed information on running in method.

Key points of operation

- If you drive this motorcycle for the first time, we recommend you'd better practise how to drive it on a non-service road till you are sufficiently familiar with its control method and operation method.
- No single hand operation is allowable because this is very dangerous. Your both hands should hold the handle and your both feet step on pedal while driving the motorcycle. In no case, your hands release from the handle to drive the motorcycle.
- Don't brake forcedly while turning, you should decelerate to safe speed prior to turning instead.
- In the case of wet and smooth road surface, braking capacity and turning capacity will decrease naturally due to low force of friction; hence you have to decelerate in advance.
- Crosswind occurs at tunnel exit most frequently. You must pay attention to driving speed while you are passing through valley or heavy-duty vehicle.
- You must comply with traffic rules and speed limit requirement.

Check prior to operation

Prior to operation, check following items. Pay attention to importance of this check. However, perform all checks and necessary maintenance prior to operation.

Check item

Item	Key point
Steering handle	1) Stability 2) Flexibility 3) No play or looseness along shaft
Brake	1) Brake handle and brake pedal have correct play 2) No malfunctional brake 3) No oil leakage
Tyre	1) Correct air pressure 2) Appropriate pattern 3) Neither crack nor cut
Fuel storage capacity	Available for planned mileage

Item	Key point
Light	Operable all lights, such as head light, tail light, brake light, panel light, turning light
Indicator light	High beam indicator light, neutral position indicator light, turning indicator light, gear indicator light
Horn and brake switch	Proper function
Machine oil	Correct Oil level
Throttle	1. Throttle dragline has appropriate play 2. Feed fuel smoothly and cut off fuel supply rapidly
Clutch	1. Appropriate tension 2. Proper lubrication
Drive chain	1. Clutch dragline has appropriate play 2. Smooth operation

Start-up of engine

Check if fuel tank switch is in "ON" position and if engine flameout switch is in "⌚" position. Insert key in keyhole on ignition switch and turn it clockwise to "⌚" position. If your motorcycle is in neutral position, neutral position indicator on the panel will light.

Warning

Keep in mind: when starting up, set variable speed device to neutral position and hold clutch lever by both hands to avoid unexpected start-up arising from incorrect gearshift.

Engine will start when pressing the ignition button.

Caution

Idle time must be controlled to avoid overtime because long-time idle may overheat engine to cause damage for internal mechanical parts.

Warning

Never start engine in poor ventilation environment or room without ventilation equipment because carbon monoxide is virulent. When leaving the motorcycle alone, driver must turn off engine.

Running

Hold clutch lever firmly and step on gear-shift lever to enable 1st Shift; open the throttle slowly and release clutch lever slightly to start the motorcycle.

When to change to higher-level shift, accelerate firstly, then close the throttle, meanwhile holding clutch handle and press gear-shift lever to enable 2nd Shift. Release clutch handle slightly and open the throttle gently; by analogy, reach the shift at highest speed.

Warning

Prior to start up, return side stand to original position, in no case with other position.

In the case of variable speed gear

Variable speed gear enables the engine to run stably within normal running range. Variable speed ratio is especially selected according to the performance of the engine. Driver should select optimal shift according to driving conditions. At any time, the driver don't slide the motorcycle while releasing the clutch; otherwise danger may occur. Before decelerating, the driver decreases shift level to enable the engine to run within normal rev range.

Caution

At any shift level, rev must be not beyond red range.