

Fill 'Er Up: Oil, Lube, Gas, and Antifreeze

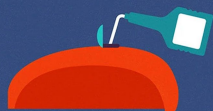


Lube up the throttle, clutch cables, and pivot points like the kick stand and shifter.

Lubing your bike before winter can repel moisture and rust buildup.



Change the oil and oil filter. With time, chemicals in used oil become acidic and can harm the engine.

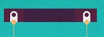


Gas tanks are especially prone to rusting during winter storage. Choose one of two options:

- Drain the tank and ensure it's completely dry before storing.
- Fill the tank completely and add a fuel stabilizer. Start the bike and let the stabilizer cycle through to make sure it mixes with all the fuel.



Charge Ahead: The Batteries



If posts are corroded, clean them before charging. Add a little grease on the threads of the bolts to keep them corrosion-free while storing.



Batteries can discharge over time.

You may want to keep the battery hooked up to a battery charger while in storage. Just make sure to use a battery tender, which shuts off before overcharging.



Don't Tread on Thin Ice: The Tires

- Check tire pressure.
- Fill tires just below your bike's specified maximum pressure to avoid under-inflation when the air gets colder.



Place your bike on a stand to keep the tires off the ground. If kept on the ground on the same spot all winter long, the tires may develop flat spots.

If your bike isn't on a stand, rotate tires every few weeks and place a patch of carpet underneath to keep water away.



Wrapping Things Up



Keep mice and other rodents out of exhaust pipes with an exhaust plug.



Once your bike is cleaned up, filled up, and ready for storage, protect it with a durable, mildew-resistant cover to keep out moisture, dirt, and dust.



Storing a bike indoors is ideal to protect it from the elements. If you don't have a garage of your own, ask around about month-by-month storage.



Dress Warm: Cold-Weather Riding

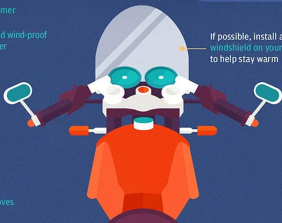


Tightly-sealed helmet with a fog-free faceshield

Neck warmer

Water- and wind-proof outer layer

Warm gloves



If possible, install a windshield on your bike to help stay warm



Make sure the antifreeze is fresh.



Since cold weather puts a damper on traction, check treads and tire pressure frequently.



Be aware of salt, ice, and potholes created by snowplows. All three are especially dangerous for motorcycle riders.



Allow extra distance between you and other vehicles for greater reaction time with potential winter hazards.



Keep an eye on the forecast. If snow starts to fall, get home immediately.



While cold-weather biking isn't completely out of the question, the winter and prepping for the following spring, it's important to take proper safety precautions—both riding in the winter and prepping for the following spring.