

General Battery Maintenance

Tools Needed:

Estimated Time:



Safety
Gloves



Protective
Glasses



Trickle
Charger



45-60 Minutes

- 1** Check your electrolyte level and make sure it matches what your manual calls a healthy level. If you need to top it off, use only distilled or deionized water.



- 2** Check the clamps, cables, and case for obvious damage, rust, or loose connections.



- 3** When storing your battery, always do it on a non-conductive surface. Storing it on concrete or metal will cause the battery to slowly lose charge over time.

- 4** Purchase a trickle charger and fully charge your battery at least once a month.



- 5** Always store your battery in a location that is above freezing. If you must, remove the battery from the bike and bring it to a location that is warmer than freezing in the colder months.



Cleaning and Lubricating Your Chain

Tools Needed:

Estimated Time:



Brush



Soap



Wire
Brush



WD-40



Clean
Cloth



Lubricant



15-30 Minutes

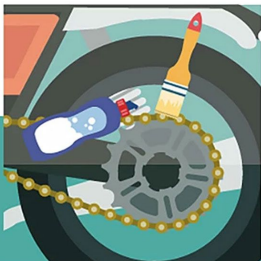
- 1** Check to see if you have a non-sealed or O-ring chain. A non-sealed chain will need to be lubricated and cleaned more often, but an O-ring chain can keep itself cleaned and lubricated for a longer period of time.



- 2** If you have an O-ring chain, check your O-rings for cracks or dryness. You may need to replace them if they are beginning to weaken.

- 3** You can clean your unsealed chain with a wire brush and some mild soap to get the dirt and grease off of it. However, use a soft-headed brush on an O-ring chain so that you don't damage the O-rings.

- 4** After cleaning the chain, let it dry. WD-40 can help you to dry all of the nooks and crannies.



- 5** Apply lubricant to the lower chain. As you go along, spin the rear wheel forward to allow the chain to climb the sprocket. Spin the rear wheel back and forth every now and again to help lube get into all of the tough spots of the chain.



- 6** Once it's clean and lubed, check the chain's slack. Generally, between an inch and an inch and three eighths is acceptable. Check your manual for specific numbers. If the chain needs adjusting, you can do so by tightening or loosening your chain adjusters.

- 7** The gold standard for chain maintenance is to check it every 300 miles – but double check your manual for more accurate advice!



GEARING UP FOR COLD WEATHER

How to Prep Your Motorcycle Before Winter Hits



Before You Store